



Accessible Travel

There are a range of accessible transport options to support the mobility needs of people with physical or sensory disabilities.

Access Bus


AccessBus is a dial-a-ride bus service providing door-to-door local transport, seven days a week between 9am-5pm. Call 0113 348 1903 for more information.

Blue Badge

A blue badge will allow you to park on-street close to your destination, either as a passenger or a driver.

Concessionary travel

A variety of concessionary travel passes are available to blind and disabled people from West Yorkshire Metro. These passes offer free or reduced fare travel.

 For further information visit:
www.woodside-travel.com/accessibletravel



Driving


If you do need to drive, there are some things you can do to reduce the negative impacts of car travel and save money.

Park & Ride

You can park at Templegreen for free and use the buses to get in to Leeds, avoiding city centre congestion and parking fees. The buses run every 10 minutes, cost £3 per day and have free Wi-Fi. Templegreen can be found on the A63 Pontefract Lane, west of M1 Junction 45.

Car Sharing

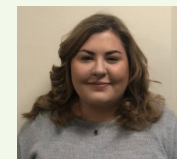
Rather than two or more cars making the same journey, drivers can travel together in a single car. Car sharing will save you money on parking and fuel.

 For further information visit:
www.woodside-travel.com/driving




Contact us

If you have any questions about travel to and from Woodside, would like to apply for your household's free MCard, or have any comments about the website, please get in touch with the Travel Plan Co-ordinator, Charlotte Best. Charlotte can be contacted at the email address below or alternatively go to the contact page on the website and complete the form.



Charlotte Best
Travel Plan Co-ordinator

 Email
travelplanning@foreconsulting.co.uk

 Website
www.woodside-travel.com/contact



Woodside Travel Information

Helping you with
your travel choices

Introduction

This leaflet has been created to introduce you to the options for making journeys from your new home at Woodside.

It is part of the Travel Plan for Woodside, which aims to encourage sustainable modes of travel that suit your lifestyle.

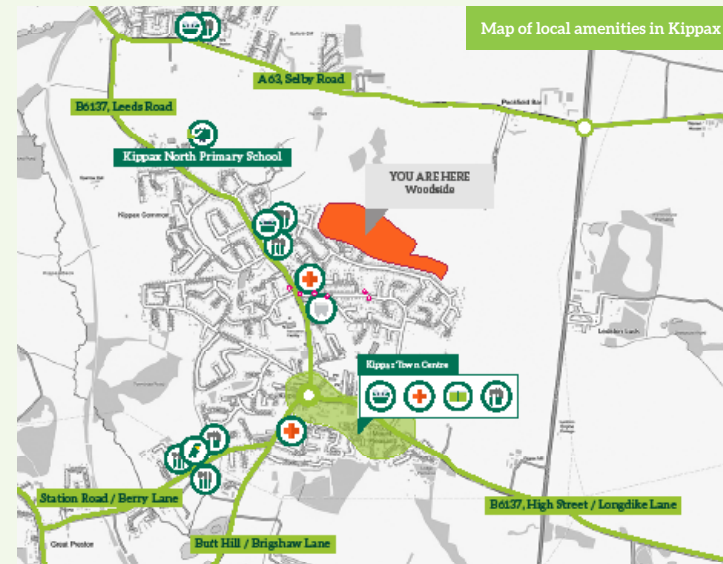


The Woodside Travel Website

A website has been developed to accompany this leaflet, and includes more detailed information about the initiatives featured here.

It provides useful links, maps and diagrams which aim to encourage walking, cycling and the use of public transport.

 www.woodside-travel.com



Walking

Walking is a great option for getting where you need to be.

Why walk?

Walking is a simple and free way to get to work, school or leisure, without the hassle of rush hour or finding a parking space. It reduces the risk of illness, aids weight loss and helps you sleep better.

Getting around your local area

Woodside is within walking distance of Kippax town centre, which has a range of amenities including shops, a library, GPs and pharmacies.

Walking to School

Kippax Greenfield Primary School, Kippax Ash Primary School and Kippax North Primary School are all within walking distance of Woodside.



For further information visit:
www.woodside-travel.com/walking



Cycling

Travelling by bike is a fun way to fit exercise into your daily routine.

Why cycle?

Cycling doubles up as transport to work, the shops, or to school; saving you money, helping the environment, and keeping you fit - all at once!

Cycling to work or school

Check at your place of work whether there is a cycle to work scheme which makes buying a bike more affordable. Garforth Academy and Brigshaw High School are within cycling distance from Woodside.

Cycle routes

Sustrans Route 697 runs through Great Preston, 10 mins from Woodside, and is largely off-road along a resurfaced old railway line.



For further information visit:
www.woodside-travel.com/cycling



Public Transport

There are practical options for travelling by bus or train if you live at Woodside.

Travelling by bus - apply for your free MCard!

Public transport use is good for you and for the environment - a full bus takes 50 cars off the road. The nearest bus stops are less than five minutes away on Gibson Lane. Persimmon Homes have made funds available to provide one FREE annual 'bus only MCard' to each household at Woodside. Contact us through the website to find out more.

Travelling by train

The 163 or 166 bus from Gibson Lane will drop you off at Garforth or East Garforth rail station. Alternatively, Garforth rail station is a 20 minute cycle ride. There are services to York, Leeds, Manchester, Newcastle and other destinations.



For further information visit:
www.woodside-travel.com/publictransport